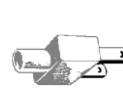


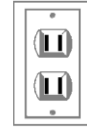
Both China & Hong Kong are 16 hours ahead than San Francisco. There is no time difference between China & Hong Kong.



220 volts AC/ 50 Hz AC.



China



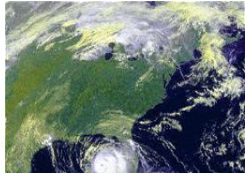
Hong Kong



1 USD = approx. 6.6 RMB  
 1 USD = approx. 7.5 HKD  
 Credit cards are well accepted in up-scale shops, restaurants and hotels



GSM (Global System for Mobile Communications) is widely used and applicable



Hong Kong : Temperature around 62°F.  
 Beijing: Temperature around 39°F  
 Xian: Temperature around 46.6°F  
 Shanghai: Temperature around 36.8°F



Sales tax on all IMPORTED commodities and food service are imposed by PRC government. Hong Kong does not impose sales tax as it is a duty free port, so it is also known as a "shopping paradise". There is NO tipping policy in Hong Kong and China, however, service staff working in up-scale restaurants, hotels and travel agents do expect tipping from their guests.

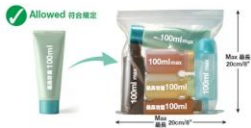
Bellman / Room Attendant	USD 2 – 3 dollars
Up-scale Restaurants not in Hotel	3-5% on the total consumption
Coach Driver	USD 2 dollars daily per visitor
Quality Tour Escort	USD 2 – 5 dollars daily per visitor

**Baggage info**



Due to the baggage restriction for traveling within Asia, all economy class passengers are allowed to have one checked bag of maximum 20KG (44 lbs) only. Therefore, any excess or overweight baggage will be charged by the carrier and such charges are to be paid by the passengers. However, you will be allowed to carry 2 checked bags with maximum 23KG (50 lbs) each for traveling from Hong Kong to United States.

For hand-carry bag, the weight can not exceed 5KG (11 lbs) and the size should not be more than 9 x 14 x 22 inches (23 x 35 x 56 cm) (length x width x height) or 45 linear inches\* (114 linear cm); all liquids, gels, aerosols in cabin baggages have to be carried in containers with a capacity 100ml (3 oz.) or less. Liquids, gels, aerosols carried in containers larger than 100ml are not to be accepted, even if the container is only part-filled.



The above containers have to be placed in a transparent re-sealable plastic bag of a maximum capacity not exceeding one liter. The containers must fit comfortably within the transparent plastic bag, which should be completely closed.



The plastic bag has to be presented separately from other cabin baggages for visual examination at the screening point. Only one transparent plastic bag per passenger is permitted.

Exemptions would be made for medications, baby milk/ food and special dietary requirements are subject to verification.

**The above information is based on past history and for your reference only. For the most updated baggage information, please call to the CARRIERS or refer to their website.**